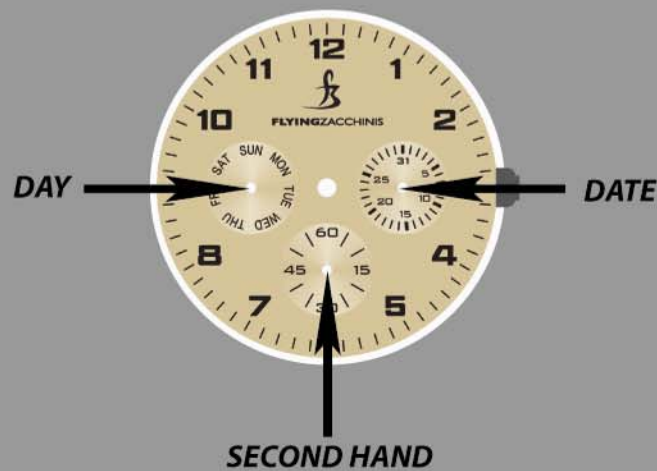


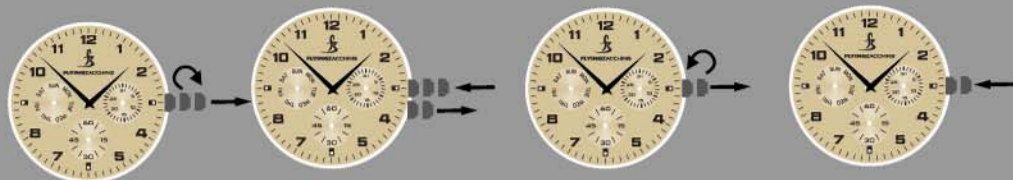
Watch Operation Manual

High Wire

TIME INDICATION



TIME SETTING



1. Pull out the crown to the second click when the small second hand is at the 12 o'clock position. It will stop on the spot and advance the hour and minute hands by turning the crown.

2. Push the crown back in to the normal position in signal.

Push out the crown to the first click.

3. Set the date by rotating the crown in counter-clockwise direction (Quick change function).

4. Push the crown back in to the normal position.

Set the day by rotating the hour and minute hands clockwise.

(Check that 24-hour hand is set correctly)

* Do not set the date between 10:00pm and 1:00am otherwise, the day may not change properly. If it is necessary to set the date during that time period, first change the time to any time outside it. Set the date and then reset the correct time.